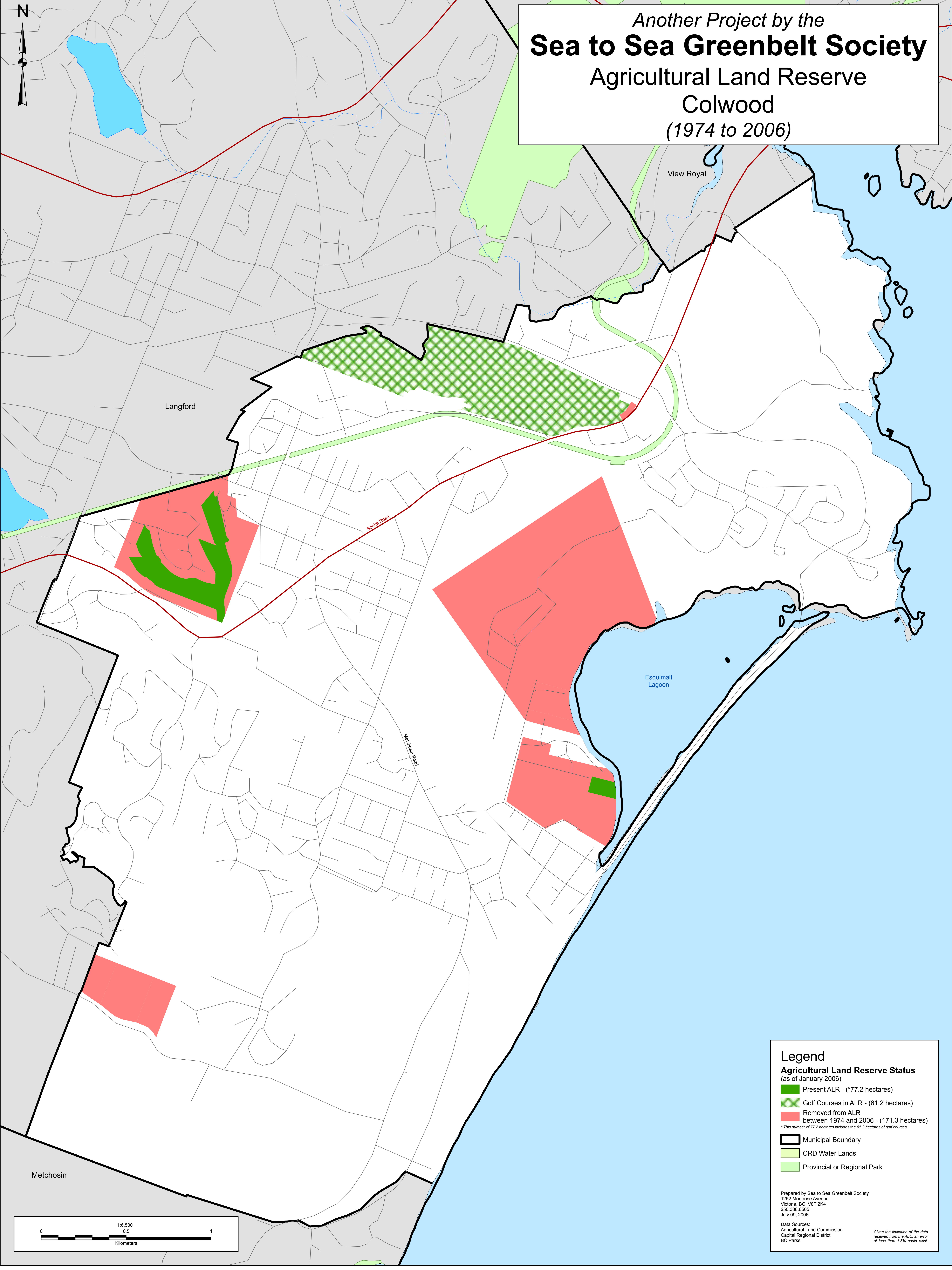


Another Project by the
Sea to Sea Greenbelt Society
 Agricultural Land Reserve
 Colwood
 (1974 to 2006)



Legend
Agricultural Land Reserve Status
 (as of January 2006)

- Present ALR - (*77.2 hectares)
- Golf Courses in ALR - (61.2 hectares)
- Removed from ALR between 1974 and 2006 - (171.3 hectares)

* This number of 77.2 hectares includes the 61.2 hectares of golf courses.

- Municipal Boundary
- CRD Water Lands
- Provincial or Regional Park

Prepared by Sea to Sea Greenbelt Society
 1252 Montrose Avenue
 Victoria, BC V8T 2K4
 250.396.6505
 July 09, 2006

Data Sources:
 Agricultural Land Commission
 Capital Regional District
 BC Parks

Given the limitation of the data received from the ALC, an error of less than 1.5% could exist.