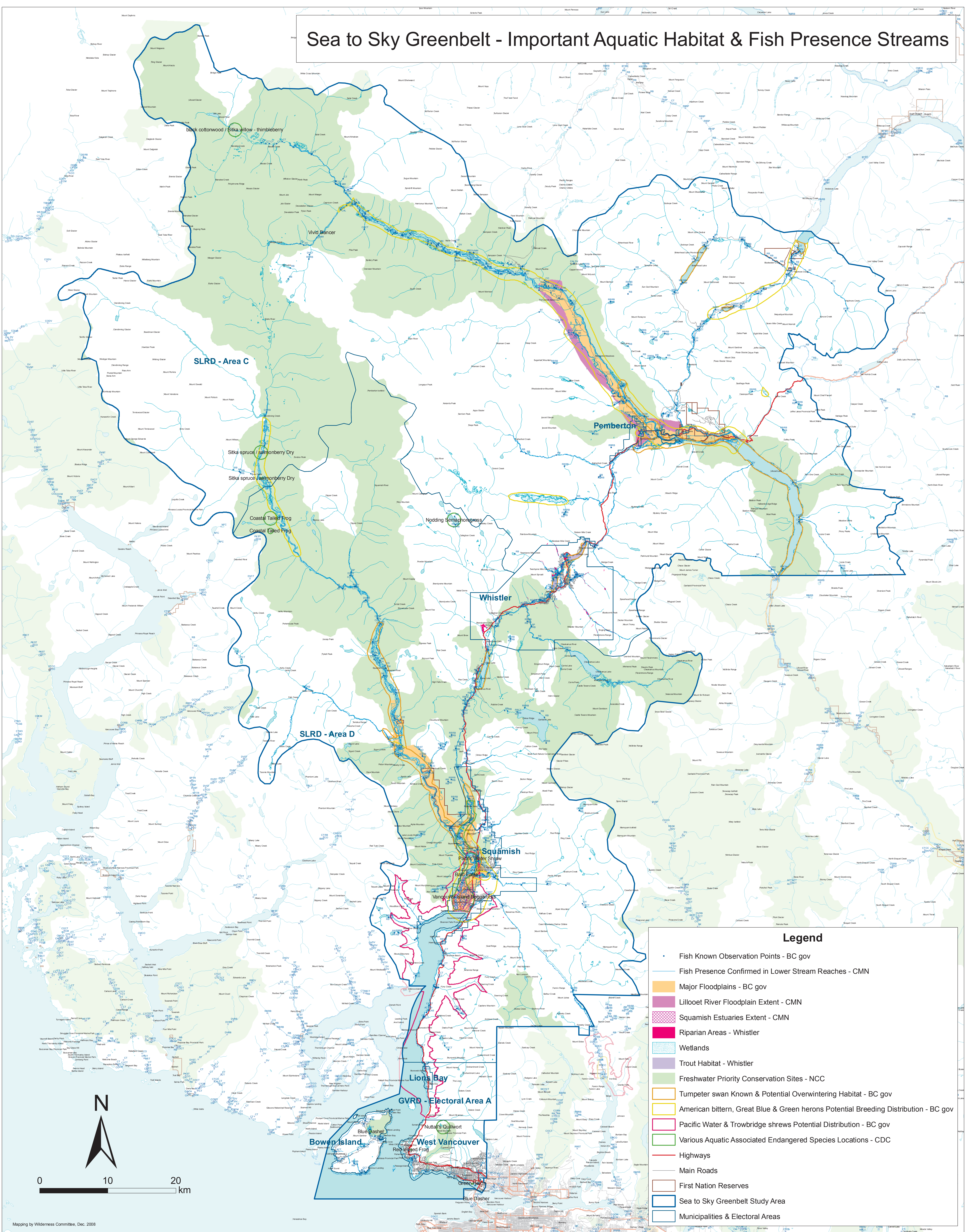


Sea to Sky Greenbelt - Important Aquatic Habitat & Fish Presence Streams



- ### Legend
- Fish Known Observation Points - BC gov
 - Fish Presence Confirmed in Lower Stream Reaches - CMN
 - Major Floodplains - BC gov
 - Lillooet River Floodplain Extent - CMN
 - Squamish Estuaries Extent - CMN
 - Riparian Areas - Whistler
 - Wetlands
 - Trout Habitat - Whistler
 - Freshwater Priority Conservation Sites - NCC
 - Tumpeter swan Known & Potential Overwintering Habitat - BC gov
 - American bittern, Great Blue & Green herons Potential Breeding Distribution - BC gov
 - Pacific Water & Trowbridge shrews Potential Distribution - BC gov
 - Various Aquatic Associated Endangered Species Locations - CDC
 - Highways
 - Main Roads
 - First Nation Reserves
 - Sea to Sky Greenbelt Study Area
 - Municipalities & Electoral Areas

