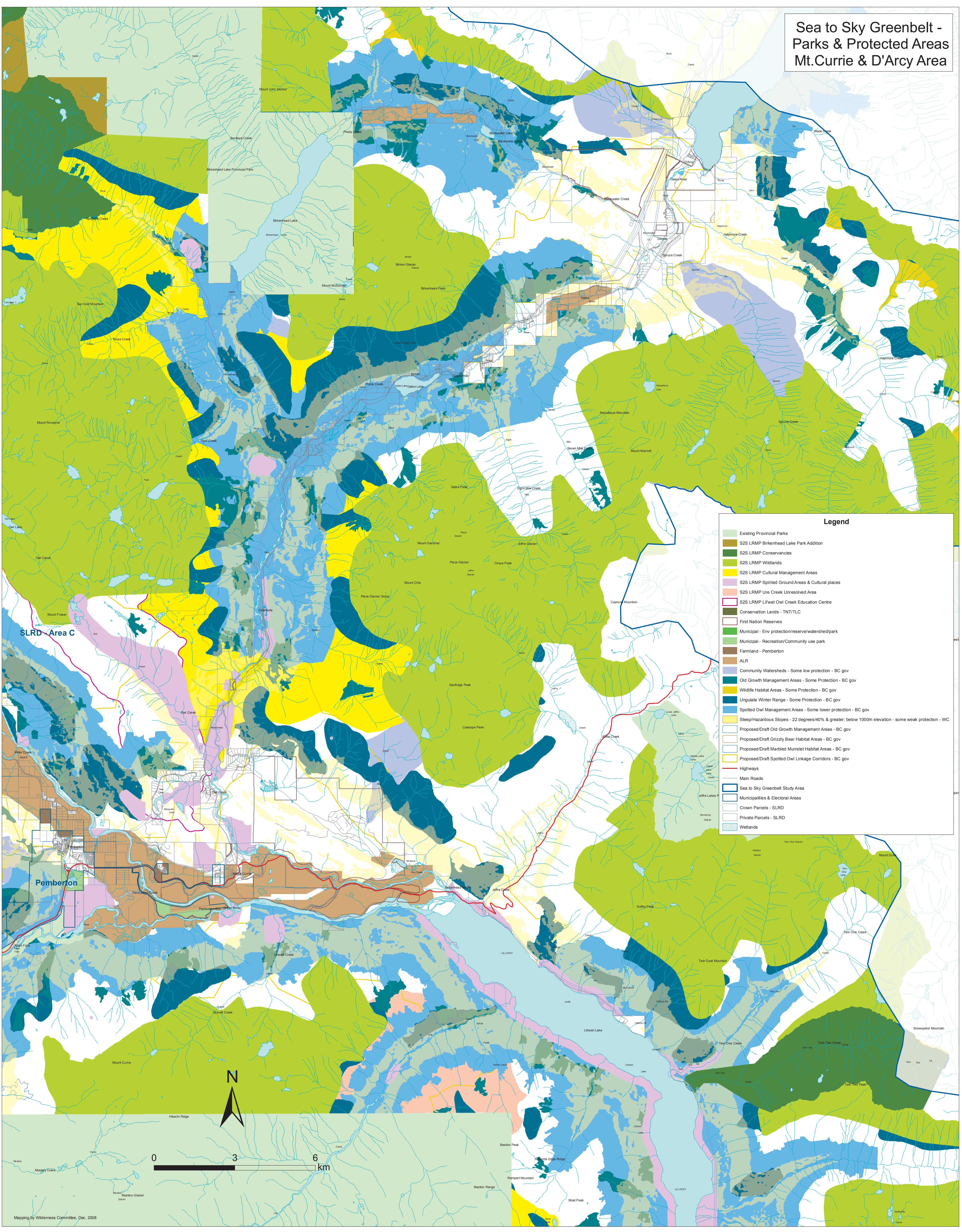


Sea to Sky Greenbelt - Parks & Protected Areas Mt. Currie & D'Arcy Area



Legend

- Existing Provincial Parks
- S2S LRMP Birkenhead Lake Park Addition
- S2S LRMP Conservancies
- S2S LRMP Wildlands
- S2S LRMP Cultural Management Areas
- S2S LRMP Spirited Ground Areas & Cultural places
- S2S LRMP Ure Creek Unresolved Area
- S2S LRMP Lil'wat Owl Creek Education Centre
- Conservation Lands - TNT/TLC
- First Nation Reserves
- Municipal - Env protection/reserve/watershed/park
- Municipal - Recreation/Community use park
- Farmland - Pemberton
- ALR
- Community Watersheds - Some low protection - BC gov
- Old Growth Management Areas - Some Protection - BC gov
- Wildlife Habitat Areas - Some Protection - BC gov
- Ungulate Winter Range - Some Protection - BC gov
- Spotted Owl Management Areas - Some lower protection - BC gov
- Steep/Hazardous Slopes - 22 degrees/40% & greater, below 1000m elevation - some weak protection - WC
- Proposed/Draft Old Growth Management Areas - BC gov
- Proposed/Draft Grizzly Bear Habitat Areas - BC gov
- Proposed/Draft Marbled Murrelet Habitat Areas - BC gov
- Proposed/Draft Spotted Owl Linkage Corridors - BC gov
- Highways
- Main Roads
- Sea to Sky Greenbelt Study Area
- Municipalities & Electoral Areas
- Crown Parcels - SLRD
- Private Parcels - SLRD
- Wetlands

